

THE ARAB – ISRAELI CONFLICT

“A history-based simulation”

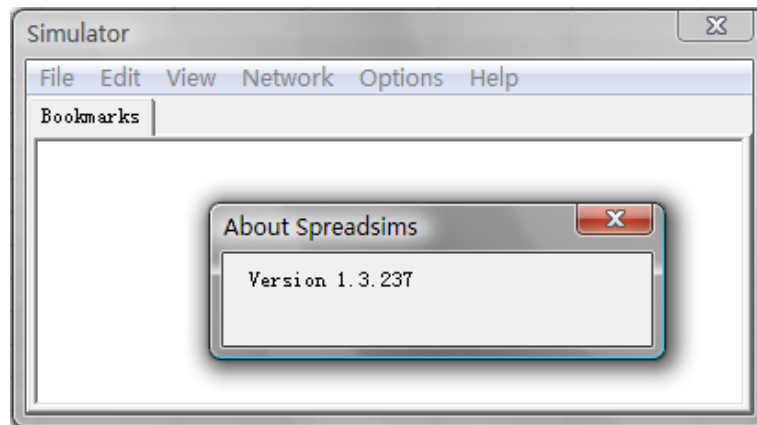
STUDENT INSTRUCTIONS

Part I: Installing the client

Step 1: Download the SpreadSims client from the SymComm [website](#) onto a computer with Excel 2003/2007 and Windows XP/Vista. Make sure your PC satisfies the system requirements shown [here](#).

Step 2: To install, double click on the setup file you downloaded and wait for installation to complete. Install any update when prompted.

Step 3: Check that you have the client installed properly by opening excel; click on the ‘add-in’ tab at the top of the screen. Click again on ‘SpreadSims’ to gain access to the simulator.

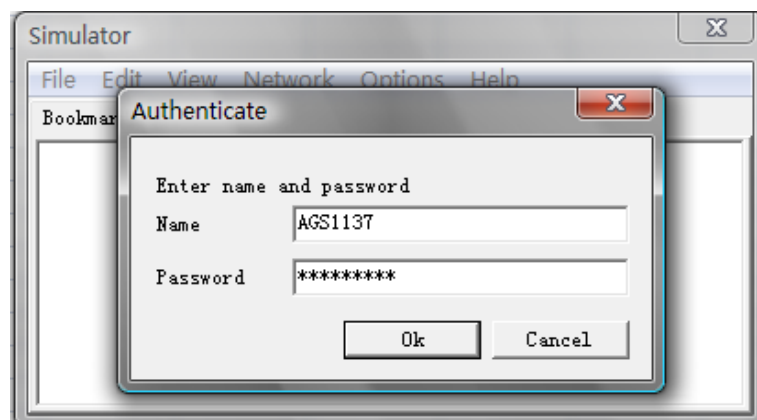


Step 4: Check if you have the latest version by going to ‘help’ -> ‘about’ in the simulator panel. It should show the version number as 1.3.237.

Step 5: If no errors come up after you have finished step 4 then the client should be successfully installed. Email SymComm support should you not able to install the client or if you have any other quires.

Part II: Downloading and using the simulation

Step 1: In the simulator panel, click on ‘network’ in the menu, then ‘open’. Enter the correct simulation ID, username and password given to you by your teacher. A separate window should pop up showing you the progress of the sim download. Once the download has been completed, the simulation should open itself.



Step 2: Carefully read the instructions provided on the front page of the simulation. Roll over once using the simulation panel to proceed. (The roll forward option can be found in the simulator panel under the simulation menu)

Step 3: Open the 'Decisions' page by clicking on its tab at the bottom of the screen. Read all messages on top of the page carefully before selecting and/or explaining your decision. When done, roll forward once to move to the next period.

Step 4: Finally when you have completed all rollovers, you may check your 'final mark' either in 'title' sheet or in the message board.

Step 5: To re-do the simulation, simply reset the entire simulation by clicking the reset button in the simulation panel and start from step 1 again.